



*CB 1565*

# LIST OF THE EXPLODED VIEWS



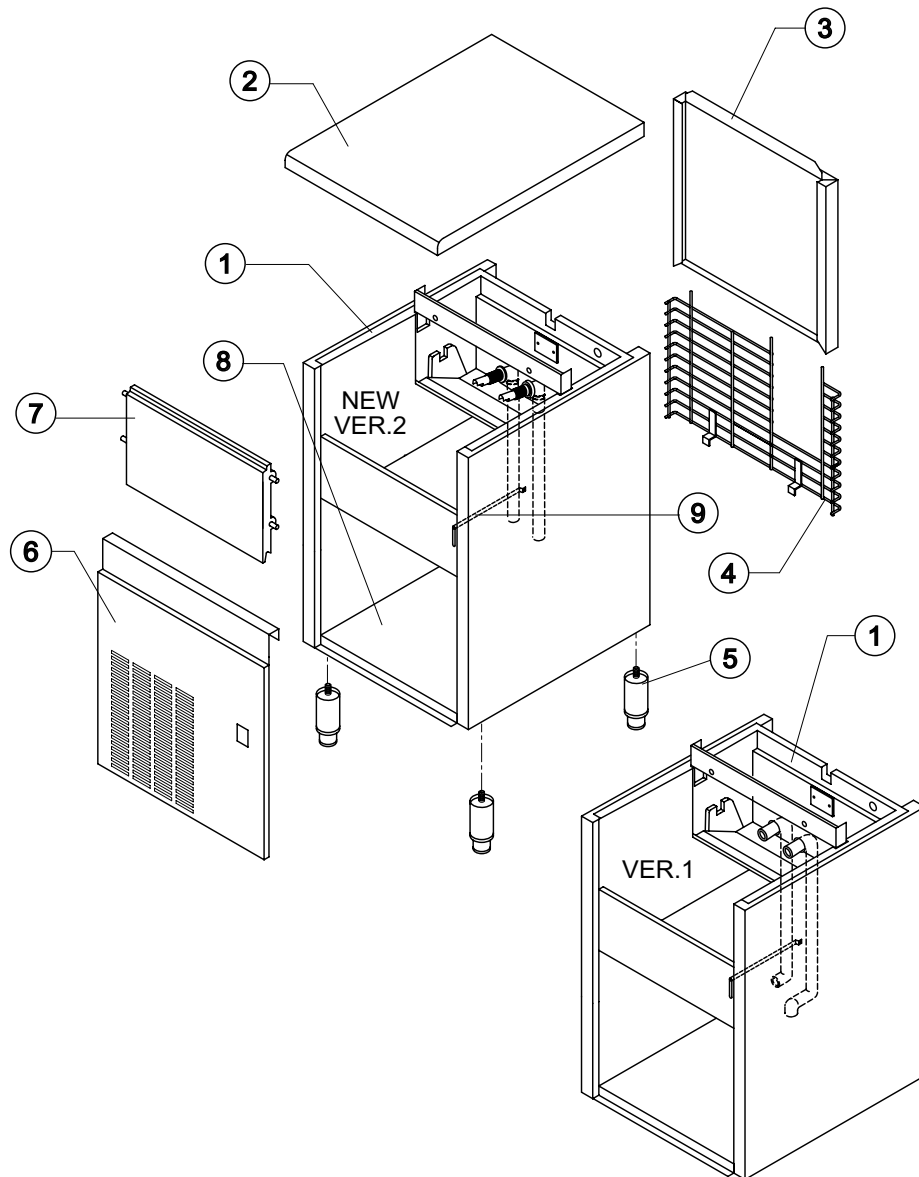
*SHELL ASSY*

*COOLING SYSTEM*

*HYDRAULIC CIRCUIT*

*ELECTRIC PARTS*

Rev. 8 - 10/09/2010



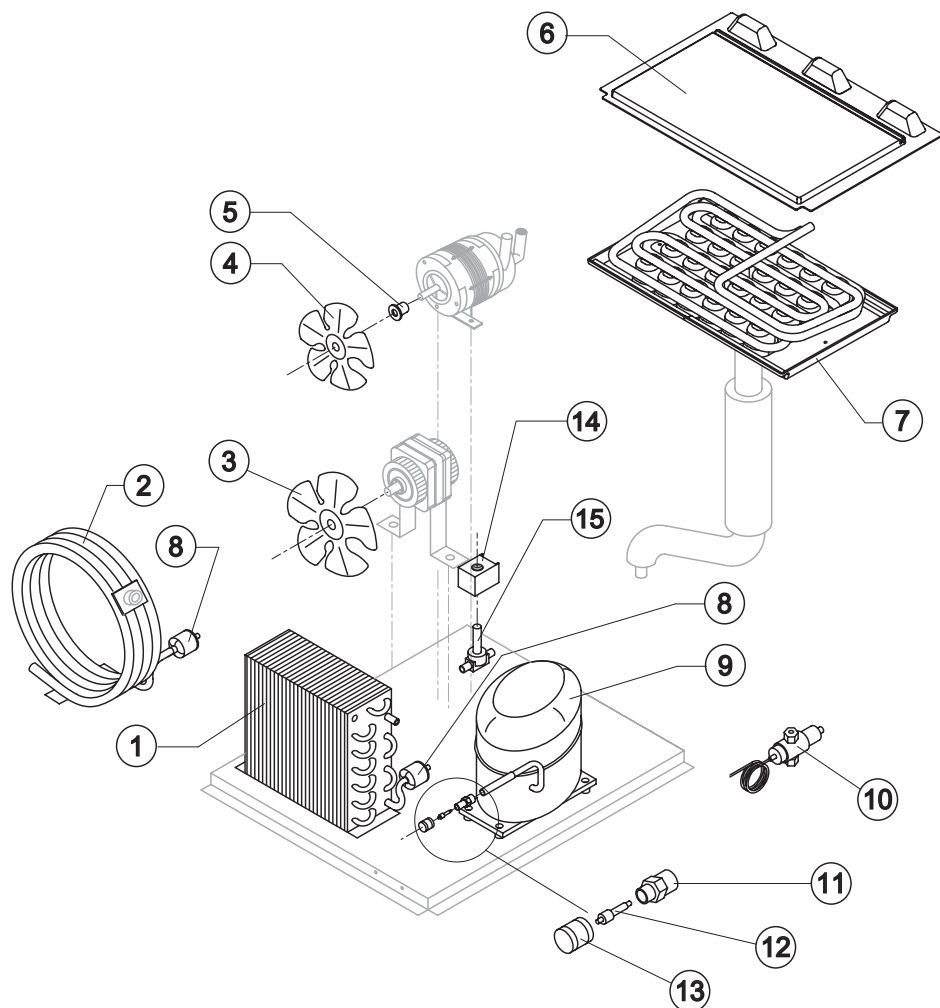
Ref.	Spare Description	Code
1	Foamed Cabinet Assy	See Table
2	Top Assembly	C22688
3	Rear Panel Assembly	C21209
4	Rear Grid	D12021
5	Adjustable Stainless Steel Foot	Current Version
5	ABS Foot	Till s/n. 142534
6	Front Grid Panel	22548
7	Door Assy	C10275
8	Base Plate	Current Version
8	Base Plate	Till s/n. 142534
9	Bulbe-holder Pipe	20521

### Ref. 1 - Foamed Cabinet Assy

Code	Condensation	Note
C11086A	Air	Version 2
C11086W	Water	Version 2
C11086/E		Version 1



Rev. 8 - 10/09/2010



### Ref. 7 - Evaporator

Kind of Cube	Code
18 g. (Standard)	D10214
33 g.	D10092
13 g.	D10126
42 g.	D10477

### Common Parts

Ref.	Spare Description	Code
4	Sucking Fan	10213
5	Fan Fixing Hub	10014
6	Evaporator Cover Panel	Current Version 10450
6	Evaporator Cover Panel	Till s/n. 224687 10058
7	Evaporator	See Table -
8*	Solid Core Drier	14084
9	Compressor	See Table -
11	Vacuum-Charge Valve Body	14007
12*	Vacuum-Charge Valve Device	14005
13*	Vacuum-Charge Valve Plug	14006
14*	Hot Gas Valve Coil	See Table -
15*	Hot Gas Valve Body	20409

### Parts for Air-Cooled Version Only

Ref.	Spare Description	Code
1	Air Condenser	Current Version 20924
1	Air Condenser	Till s/n. 438911 20426
1	Air Condenser	Till s/n. 42925 20148
3	Sucking Fan	Current Version 20407
3	Sucking Fan	Till s/n. 42925 20153

### Parts for Water-Cooled Version Only

Ref.	Spare Description	Code
2	Water Condenser	14081
3	Sucking Fan	Till s/n. 219844 10213
10	Pressostatic Valve	20210

### Ref. 9 - Compressor

Tension	Code
T11	23878
T12	23874
T13	23586
T19	23586

### Ref. 14\* - Hot Gas Valve Coil

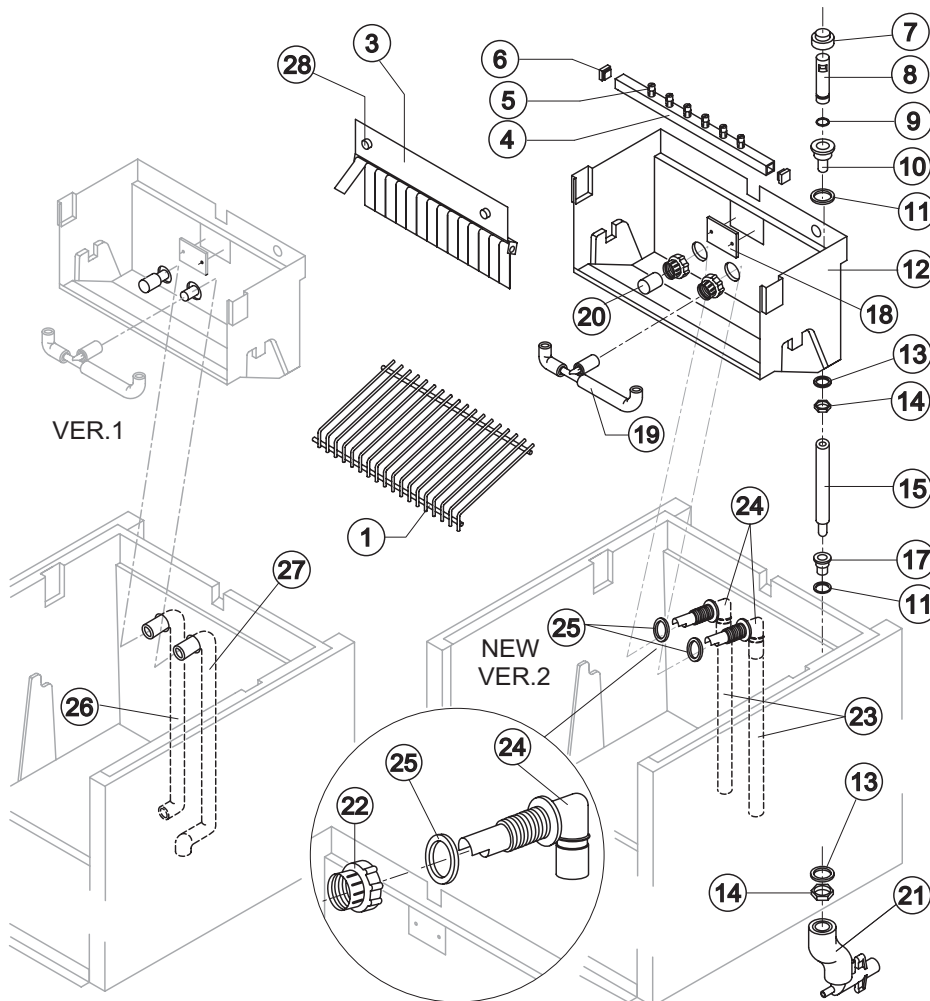
Tension	Code
T11	23091
T12	23091
T13	23256
T19	23256



# CB 1565

# HYDRAULIC CIRCUIT

Rev. 8 - 10/09/2010



**Ref. 1 - Ice Cube Slide**

Kind of Cube	Code
18 g. (Standard)	D12022
33 g.	D12033
13 g.	D12040
42 g.	D12033

**Ref. 4\* - Sprayers Bar Ass.**

Kind of Cube	Code
18 g. (Standard)	C20144
33 g.	C20157
13 g.	C20200
42 g.	C20157

### Common Parts

Ref.	Spare Description	Code
1	Ice Cube Slides	See Table
3	Flags Support Assy	C22134
4*	Sprayers Bar Assembly	See Table
5	Sprayer	D20002
6	Sprayers Bar Plug	10012
7*	Overflow Cap	10305
8*	Overflow Pipe	10133
9*	OR Gasket for Overflow Pipe	20233
10	Overflow Pipe Nipple	10471
11	Silicone Gasket	13006
12	Inner Basin	10055
13	Semirigid Polyethylene Gasket	13007
14	Bin Discharge Nut	10096
15*	Overflow Pipe Assembly	13155
17	Water Outlet Nipple	10472
18	Slide Keep Plate	Till s/n. 233769
19	Sprayers Bar Pipe Connection Assy	C13036
20*	Pump Suction Filter	20005
22	Fitting Locking Ring	Version 2
23	Pump Suction/Delivery Pipe	Version 2
24	Fitting of Pump Suction/Delivery Pipes	Version 2
25	Gasket for Pump Suction/Delivery Pipes	Version 2
26	Pump Suction Pipe	Version 1
27	Pump Delivery Pipe	Version 1
28	Fixing Screw	20009

### Parts for Air Cooled Version Only

Ref.	Spare Description	Code
21	Discharges Manifold	C10006

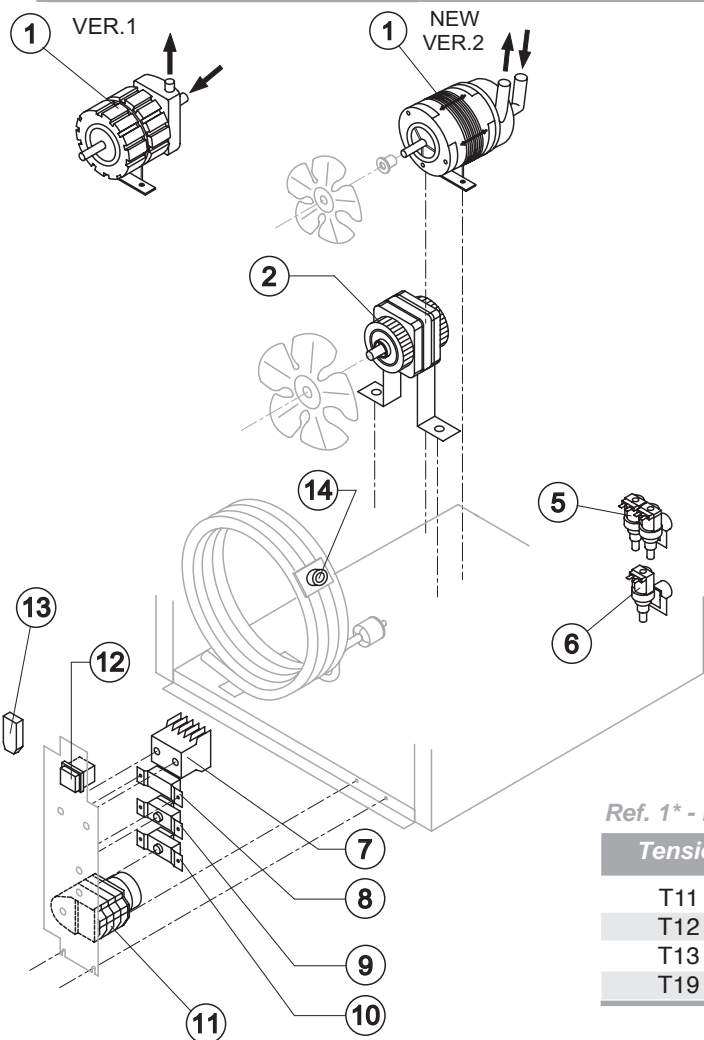
### Parts for Water Cooled Version Only

Ref.	Spare Description	Code
21	Discharges Manifold	C26452



# CB 1565

# ELECTRIC PARTS



### Common Parts

Ref.	Spare Description	Code
1*	Pump Assy	See Table -
7*	Contactor	See Table -
9*	Bin Thermostat	R23005
10*	Evaporator Thermostat	R23591
11*	Timer	See Table -
12*	Green Light Switch (On-Off)	23327

### Parts for Air-Cooled Version Only

Ref.	Spare Description	Code
2*	Fan Motor	See Table -
6*	1 Way- Water Inlet Valve	See Table -
8*	Condenser Pressure Switch	23175
13	Anti Radio Interference Filter	Only T11 C23459

### Parts for Water-Cooled Version Only

Ref.	Spare Description	Code
2	Fan Motor	Till s/n. 219844 See Table -
5*	2 Ways- Water Inlet Valve	See Table -
14*	Safety Pressure Switch	C23114

Rev. 8 - 10/09/2010

### Ref. 1\* - Pump Assy

Tension	Version 1	Version 2
T11	C23068	C23462
T12	C23068	C23462
T13	C23264	C23663
T19	-	C23663

### Ref. 2\* - Fan motor

Tension	Air	Water Till s/n. 219844
T11	23121	23029
T12	23121	23029
T13	23621	23683
T19	23621	-

### Ref. 7\* - Contactor

Tension	Code
T11	23594
T12	23594
T13	23625
T19	23625

### Ref. 5\* - 2 Ways- Water inlet valve

Tension	Cube 18g/13g	Cube 33g	Cube 42g
T11	23138	23138	23138
T12	23138	23138	23138
T13	23755	23790	23790
T19	23755	23790	23790

### Ref. 6\* - 1 Way- Water Inlet valve

Tension	Cube 18g/13g	Cube 33g	Cube 42g
T11	23220	23220	23787
T12	23220	23787	23787
T13	23281	23789	23789
T19	23281	23789	23789

### Ref. 8\* - Cond. Pressure Switch

Tension	Code
T11	23175
T12	23175
T13	23175
T19	23680

### Ref. 11\* - Timer

Tension	18 g Cube	33 g Cube	13 g Cube	42 g Cube
T11	23247	23248	23472	23780
T12	23222	23780	23247	23780
T13	23833	23786	23258	23786
T19	23833	23786	23258	23786